

Baader MPCC holder for fixed corrector low-profile focusers

 chantepierre

[VIEW IN BROWSER](#)

updated 11. 1. 2025 | published 11. 1. 2025

Summary

Holds a Baader MPCC by the external filter thread for fixed usage in a very low profile focuser UTA.

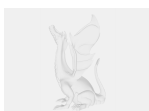
[Learning](#) > [Physics & Astronomy](#)

Holds a Baader MPCC by the external filter thread for fixed usage in a very low profile focuser UTA.

Add three little wood slabs to the Backfocus setting tool so you have a handy driver to adjust backfocus, once.

See the schematic to understand why that kind of holder could be necessary to respect the 55 to 60mm backfocus (depending on your conic constant).

Model files



backfocus_tool.step



mpcc_holder_outer_thread.step



mpcc_holder.step

License ©

This work is licensed under a
Creative Commons (4.0 International License)



Attribution

-
- ✗ | Sharing without ATTRIBUTION
 - ✓ | Remix Culture allowed
 - ✓ | Commercial Use
 - ✓ | Free Cultural Works
 - ✓ | Meets Open Definition